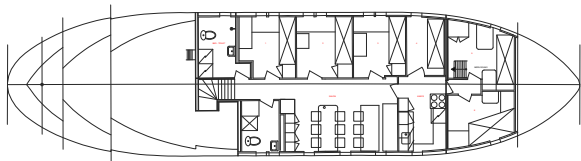
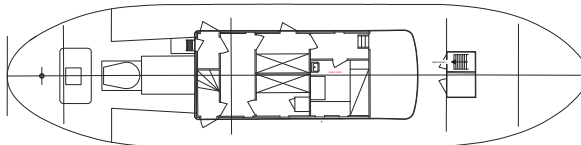
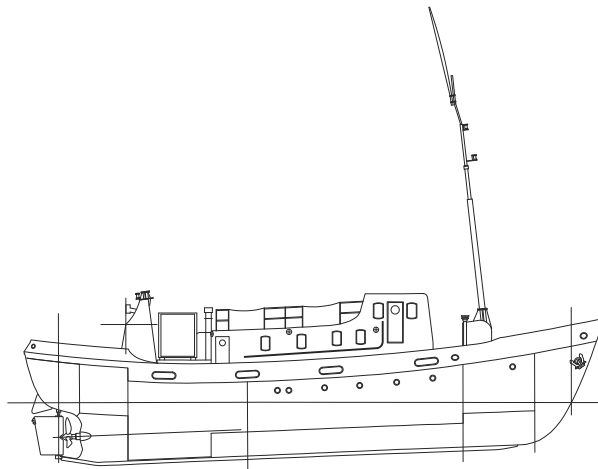


Minna Martek - OYTL



NameMinna Martek
 Call sign.....OYTL
 Flag state.....Denmark, Danish ship register
 TypeCargo ship, specialpurpose as serviceship
 Crew3-4
 Passengers12
 Length22, 76m
 Beam6,02m
 Draft.....2,70m
 Material.....Steel, aluminium superstructure
 Tonnage99,97 BRT
 Main engine.....Volvo Penta D12 MH, 328KW/450BHP
 Aux engines.....2 x John Deere 3029D, 24KW and 27KW, 3x220 VAC 50Hz
 Bunker27 m³ diesel, 10 m³ freshwater
 Speed8 knots at 40 liters/hour, 8,5 knots at 70 liters/hour
 Range.....4900 Nm at 8 knots with heating and one aux running.

Equipment

Chartplotter.....MaxSea PC Based, Dual Display
 Chartplotter #2.....Simrad CX33
 GPS compassFuruno SC-50
 Radar.....Koden MDC 2240
 Echo sounderSimrad CX-33
 AutopilotSimrad AP50
 NavtexFuruno NX-300
 Rudder indicator.....Robertson RI35
 Magnetic compass ...Einar Weilbach & Co
 VHFSailor Compact VHF RT 2048
 VH Handheld2 pcs.
 MF/HF/DSC.....Furuno FS-2570C
 GSM voice, data.....Ericsson W25, Quad band GSM, WCDMA, HSPDA, EDGE, GPRS
 Iridium.....Motorola 9505 docked with external antenna
 InternetWLAN access under GSM coverage
 Print/copy/scan.....HP Color LaserJet CM1213nfi MFP

Engine room

Compressors1 x 2½ bhp, 25L tank
 Heater/boiler.....1 x
 Fire protectionHalon

Deck equipment

Deck cranePalfinger PK 7000 6,3tm
 Anchors2
 Searchlights.....Norselight
 Fixed lcesearchlight .1 pcs 4000w
 RIB.....1 equipped with 40bhp
 Flood lights2 x 500w

Safety equipment

Life rafts.....2 x Viking 16 person Solas life rafts
 Life jackets16 Solas approved life jackets
 Survival suits16 Solas approved survival suits
 EPIRB.....McMurdo
 SARTMcMurdo SART
 Portable VHF.....McMurdo R1
 Fire pumpHatz – Diesel SCS
 Fire extinguisher.....10 pcs.
 Fire alarm system....Consilium Marine C-303
 Smoke diver equip ...2 suits
 Medicine chestB

General arrangement

WheelhouseSeating for one person, room for several persons.
 GalleyDishwasher, Sjølund Smed stove.
 Mess room.....2 tables and seating, refrigerator and freezer, TV, DVD, FM Radio
 Cabins8 double berths, 1 single berths
 WC/Shower2
 Engine room.....small workshop, access to cargo hold
 Cargo hold.....8m³, compressor, large freezer, emergency exit.

Note: All information given in god faith, but is targeted to change.

Minna Martek - OYTL



Minna Martek - OYTL



Minna Martek - OYTL

